



Nigeria Centre for Disease Control

Protecting the health of Nigerians

www.ncdc.gov.ng

PLOT 801 EBITU UKIWE STREET, JABI ABUJA, NIGERIA.
TOLL FREE CALL: 6232. Email: info@ncdc.gov.ng

@NCDCgov

Cholera Situation Report

WEEKLY EPIDEMIOLOGICAL REPORT 17

Epi Week 40: 04 October – 10 October 2021

Key Points

Table 1: Summary of current week (Epi week 40 ,2021)

Suspected Cases	Deaths (Suspected cases)	Case Fatality Ratio (%)	States Reporting Cases	LGAs Reporting cases
535	0	0.0%	5	10

Table 2: Cumulative summary from Epi week 1-39,2021

Suspected Cases	Deaths (Suspected cases)	Case Fatality Ratio (%)	States Reporting Cases	LGAs Reporting cases
90,890	3,208	3.5%	32	364

Week 40 Highlights

- Thirty-one states and FCT have reported suspected cholera cases in 2021. These are Abia, Adamawa, Bauchi, Bayelsa, Benue, Borno, Cross River, Delta, Ebonyi, Ekiti, Enugu, FCT, Gombe, Jigawa, Kaduna, Kano, Katsina, Kebbi, Kogi, Kwara, Nasarawa, Niger, Ogun, Ondo, Osun, Oyo, Plateau, Sokoto, Taraba, Yobe, Rivers and Zamfara
- In the reporting week, 5 states reported **535** suspected cases - Katsina (261), Zamfara (137), Gombe (70), Adamawa (34) and Sokoto (33)
- There was a **50% decrease in the number of new suspected cases** in week 40 (535) compared with week 39 (1063)
- Katsina (261) and Zamfara (137) account for 74.4% of 535 suspected cases reported in week 40
- During the reporting week, 26 Cholera Rapid Diagnostic Tests (RDT) were conducted. RDT conducted were from Zamfara (12), Katsina (9) and Adamawa (5). Of this, a total of 14 (54%) were positive by RDT
- A total of 10 stool cultures were done in Zamfara (10). Of this, none (0%) were positive
- Of the cases reported, there were zero deaths from the five states reporting with a weekly case fatality ratio (CFR) of 0.0%
- No new state reported cases in week 40
- The national multi-sectoral EOC activated at level 02 continues to coordinate the national response

Cumulative Epi-Summary

- As at **10th October 2021**, a total of **90,890 suspected cases** including **3,208 deaths (CFR 3.5%)** have been reported from 31 states and FCT in 2021
- Of the suspected cases since the beginning of the year, **age group 5 - 14 years** is the most affected age group for male and female
- Of all suspected cases, **50% are males and 50% are females**
- Three states - Bauchi (19,452 cases), Kano (12,116 cases), Jigawa (10,763 cases) and Zamfara (10,148 cases) account for 58% of all cumulative cases
- Twelve LGAs across five states Bauchi (4), Zamfara (4), Jigawa (2), Kano (1), and Katsina (1) have reported more than 1,000 cases each this year

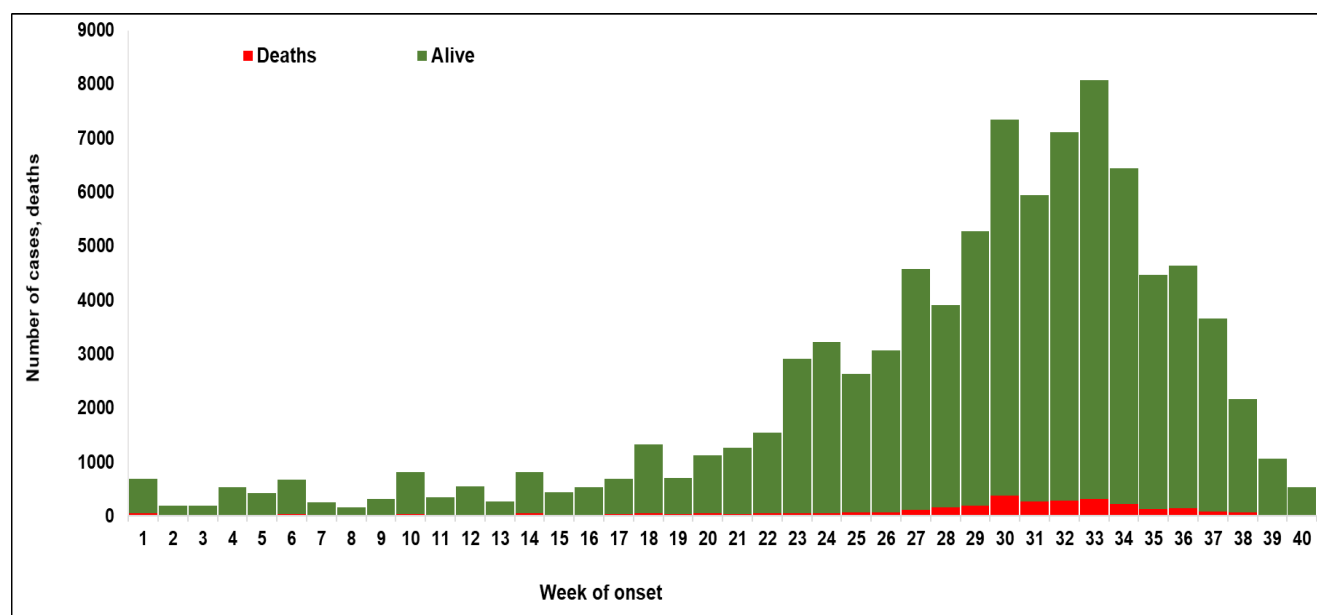
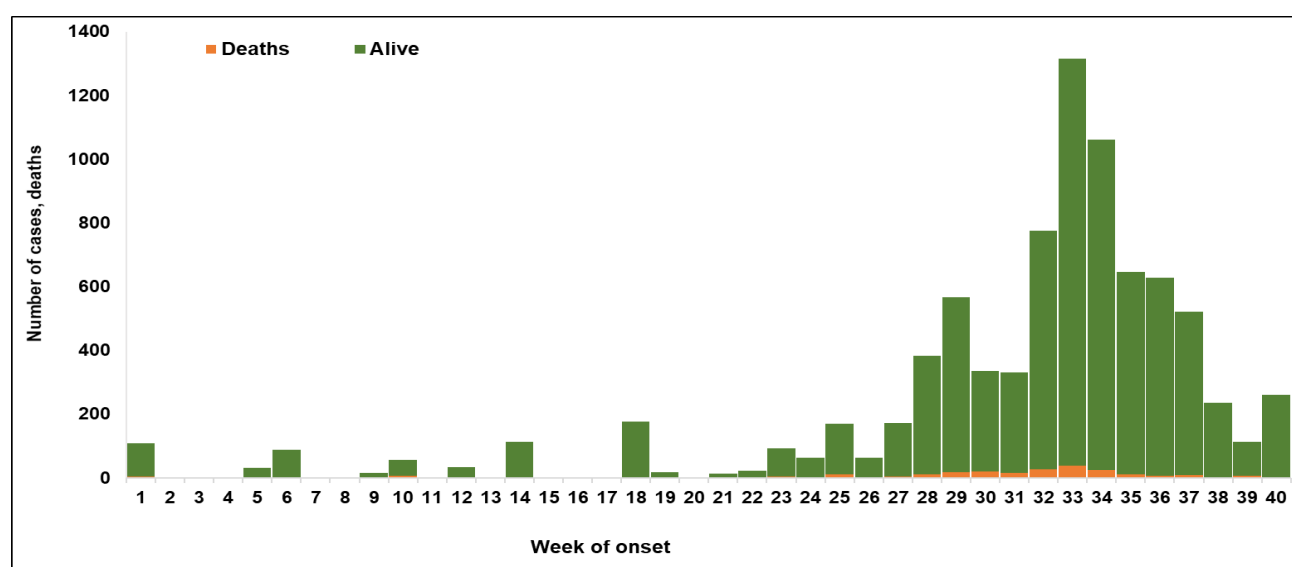


Figure 1. Epidemic curve of weekly reported Cholera cases, week 1 to week 40, 2021



Yobe State

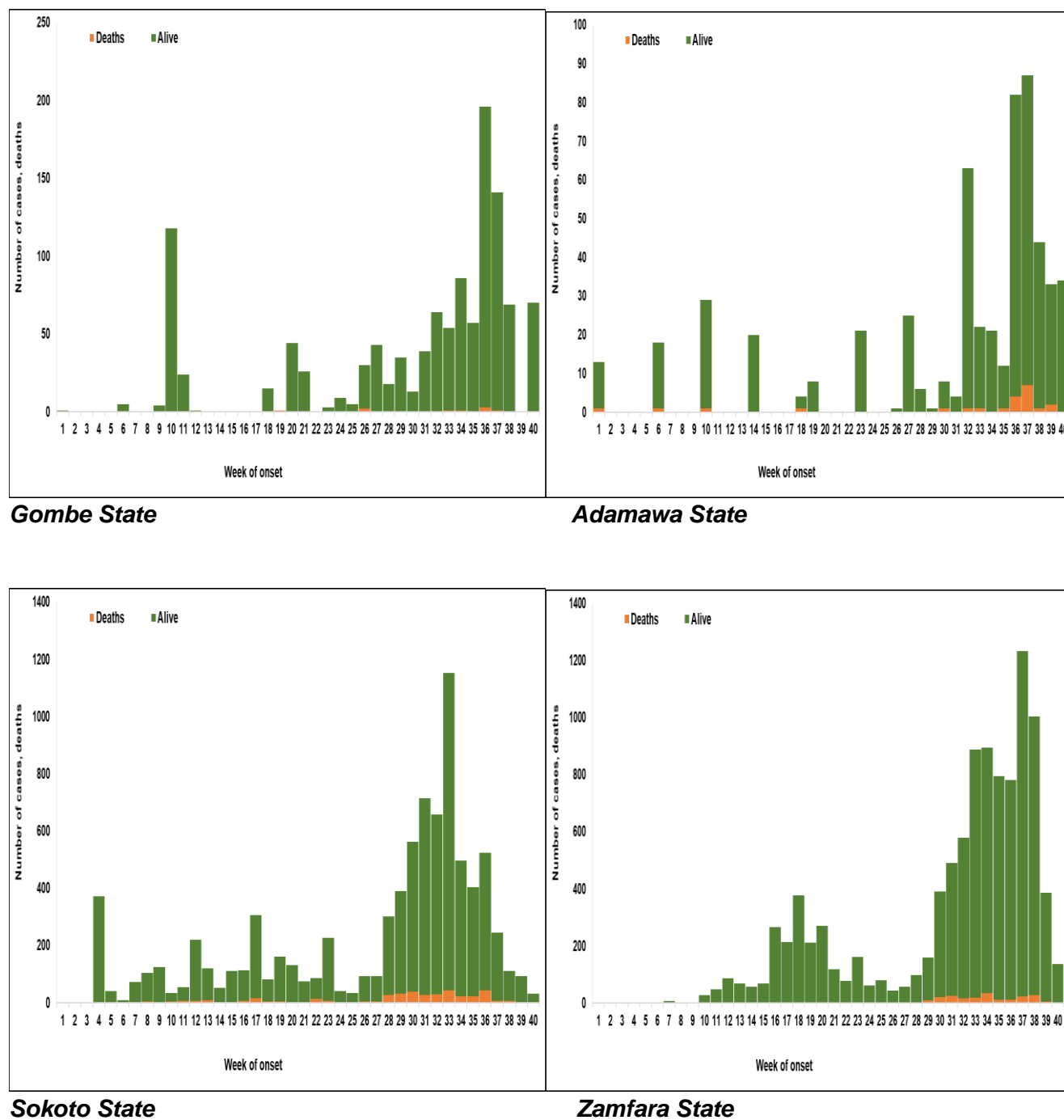


Figure 2. State epidemic curve of weekly reported cholera cases, week 1 to week 40, 2021

Table 3: Top 10 states in cumulative cases

No	State	Cases	Percent of cumulative cases	Cumulative % of total cases
1	Bauchi	19,452	21%	21%
2	Kano	12,116	13%	34%
3	Jigawa	10,763	12%	46%
4	Zamfara	10,148	11%	57%
5	Sokoto	8,453	9%	66%
6	Katsina	8,430	9%	75%
7	Kebbi	4,568	5%	80%
8	Yobe	3,085	3%	83%
9	Niger	2,266	2%	85%
10	Kaduna	2,083	2%	87%
Total		81,364	87%	

Table 4: Top 20 Local Government Areas (LGAs) in cumulative cases

No	LGA	State	Cases	% of cumulative cases	Cumulative %
1	Bauchi	Bauchi	9290	10%	10%
2	Zurmi	Zamfara	2411	3%	13%
3	Hadejia	Jigawa	2331	3%	16%
4	Shinkafi	Zamfara	2152	2%	18%
5	Dutse	Jigawa	2129	2%	20%
6	Gusau	Zamfara	2012	2%	22%
7	Sumaila	Kano	1923	2%	24%
8	Toro	Bauchi	1849	2%	26%
9	Funtua	Katsina	1818	2%	28%
10	Anka	Zamfara	1642	2%	30%
11	Ganjuwa	Bauchi	1306	1%	31%
12	Tafawa Balewa	Bauchi	1119	1%	32%
13	Birnin Kudu	Jigawa	970	1%	33%
14	Gwadabawa	Sokoto	967	1%	34%
15	Gwoza	Borno	960	1%	35%
16	Dange-Shuni	Sokoto	958	1%	36%
17	Ningi	Bauchi	861	1%	37%
18	Bichi	Kano	837	1%	38%
19	Damaturu	Yobe	800	1%	39%
20	Illela	Sokoto	722	1%	40%
Total			37,057	40	

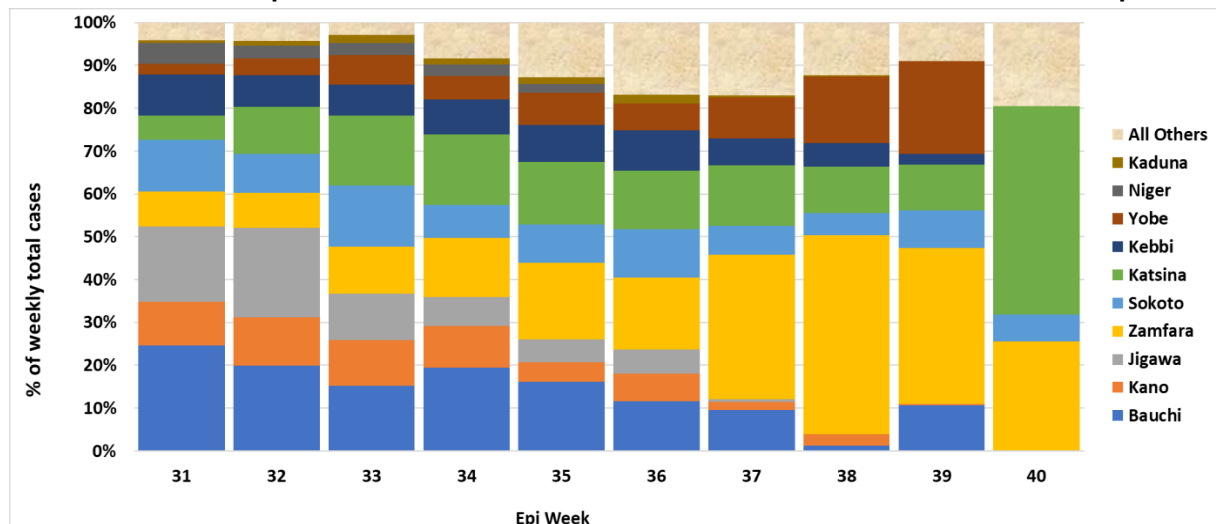


Figure 3. Percentage contribution of weekly cases by state in recent 10 weeks, week 31- 40, 2021



Figure 4. Age-Sex Pyramid for cumulative cholera cases, week 1-40 , 2021: N=90,613

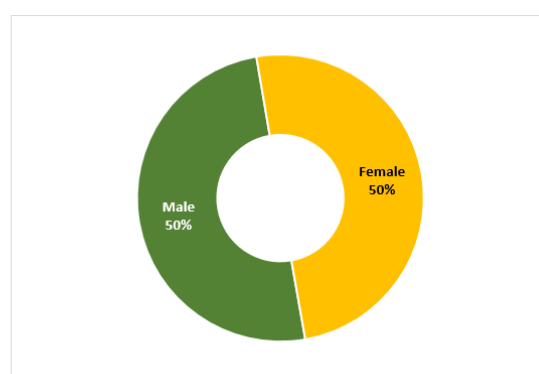


Figure 5. Sex disaggregation for cumulative cholera cases, week 1-40 , 2021: N=90,613

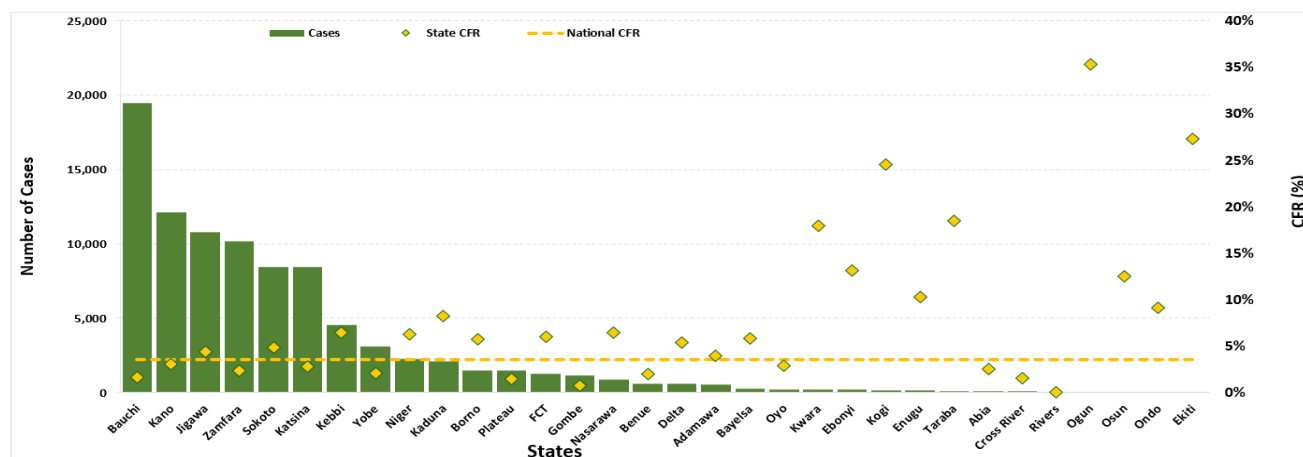


Figure 6: Number of cumulative cholera cases with case fatality ratio (CFR) by state, week 1-40, 2021

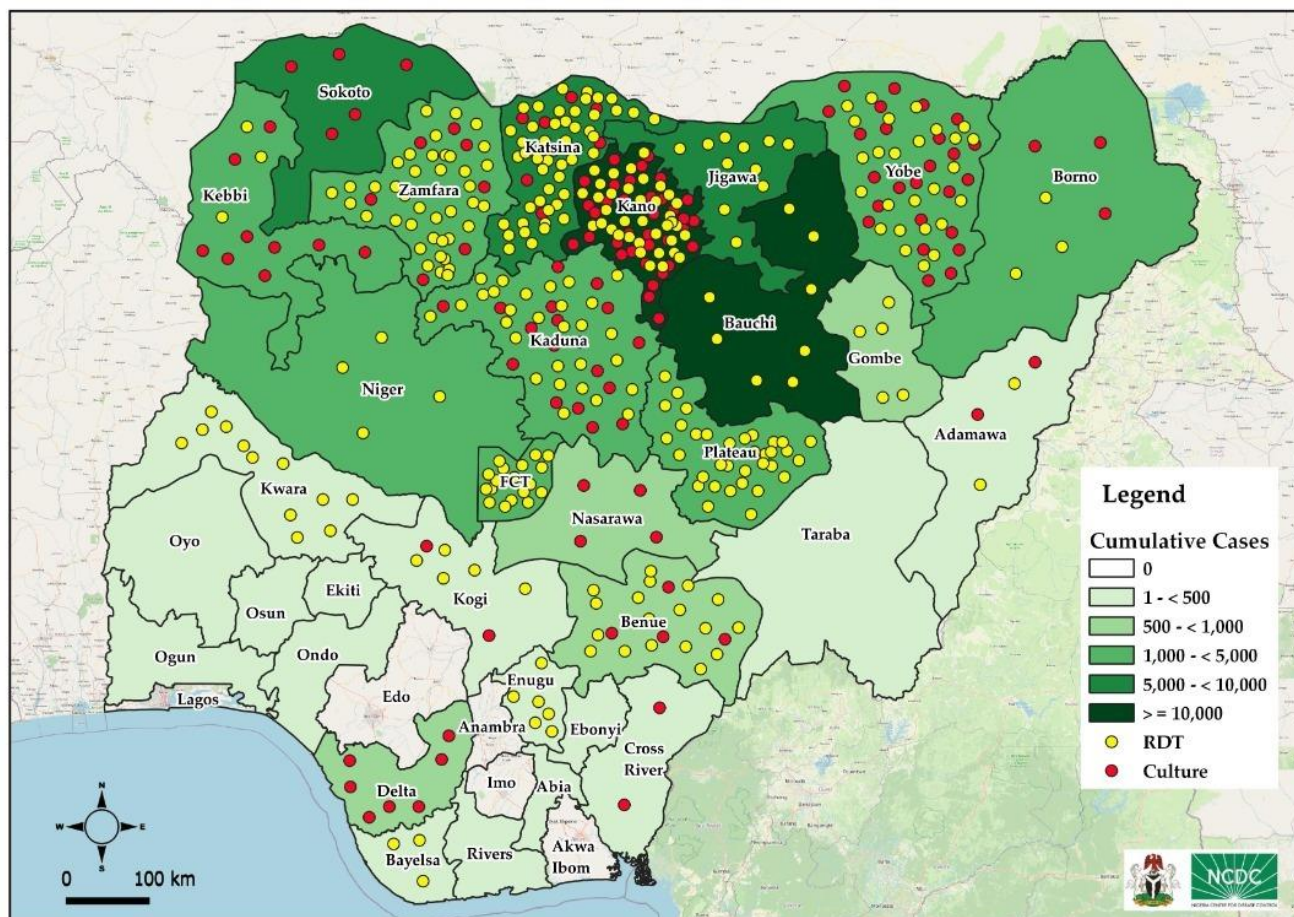


Figure 7. Map of Nigeria showing states with RDT + Culture confirmation and suspected cases, week 1- 40, 2021

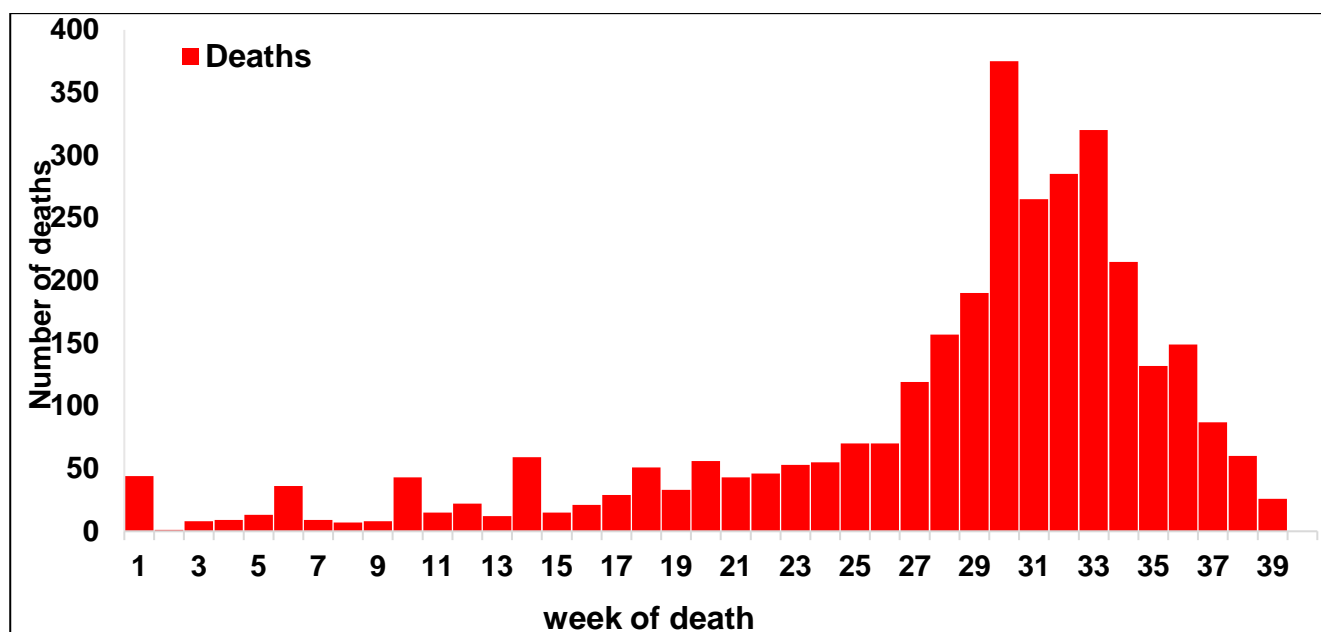


Figure 8: Trends in Deaths, week 1-40, 2021, Nigeria

	States	State outbreak status*	Current week: (Week 40)							Cumulative (Week 1 - 40)				
			Cases		Deaths		Tests			Cases	Deaths	CFR	Tests	
			Cases	% change	Deaths	% change	RDT (%Pos)	Culture (%pos)	RDT (%Pos)				Culture (%pos)	
1	Bauchi	Active		▼ 100%		▼ 100%				19,452	323	1.7%	152 (67%)	25 (100%)
2	Kano	Active		▼ 100%						12,116	368	3.0%	21 (95%)	21 (81%)
3	Jigawa									10,763	470	4.4%	37 (65%)	
4	Zamfara	Active	137	▼ 65%		▼ 100%	12 (75%)	10 (0%)		10,148	241	2.4%	120 (64%)	92 (74%)
5	Sokoto	Active	33	▼ 65%		▼ 100%				8,453	410	4.9%		5 (80%)
6	Katsina	Active	261	▲ 129%		▼ 100%	9 (22%)			8,430	237	2.8%	222 (23%)	139 (12%)
7	Kebbi	Active		▼ 100%		▼ 100%				4,568	296	6.5%	58 (74%)	11 (64%)
8	Yobe	Active		▼ 100%		▼ 100%				3,085	65	2.1%	124 (77%)	101 (87%)
9	Niger									2,266	142	6.3%	79 (61%)	
10	Kaduna	Active								2,083	171	8.2%	183 (55%)	15 (87%)
11	Borno	Active								1,507	86	5.7%	38 (92%)	9 (67%)
12	Plateau									1,481	21	1.4%	76 (43%)	5 (0%)
13	FCT									1,286	77	6.0%	29 (72%)	
14	Gombe	Active	70	▲ 100%						1,171	9	0.8%	216 (77%)	
15	Nasarawa	Active		▼ 100%						857	55	6.4%	17 (100%)	
16	Benue									598	12	2.0%	19 (100%)	4 (100%)
17	Delta									578	31	5.4%		5 (40%)
18	Adamawa	Active	34	▲ 3%		▼ 100%	5 (60%)			556	22	4.0%	192 (62%)	91 (65%)
19	Bayelsa									256	15	5.9%	4 (75%)	4 (0%)
20	Oyo	Active		▼ 100%						209	6	2.9%	5 (40%)	
21	Kwara									195	35	17.9%	134 (10%)	
22	Ebonyi	Active		▼ 100%		▼ 100%				175	23	13.1%	3 (100%)	
23	Kogi									151	37	24.5%	9 (78%)	8 (50%)
24	Enugu									127	13	10.2%	7 (100%)	
25	Taraba									119	22	18.5%	11 (73%)	
26	Abia	Active		▼ 100%						78	2	2.6%	10 (40%)	5 (40%)
27	Cross River									64	1	1.6%		3 (67%)
28	Rivers									46	-	0.0%		
29	Ogun									34	12	35.3%		
30	Osun									16	2	12.5%	2 (50%)	2 (0%)
31	Ondo									11	1	9.1%	4 (25%)	
32	Ekiti									11	3	27.3%	2 (100%)	2 (100%)
	National	15	535	▼ 50%	0	▼ 100%	26 (54%)	10 (0%)		90,890	3,208	3.5%	1774 (58%)	547 (58%)

7 | Page Disclaimer – The information contained in this document is confidential, privileged and only for the intended recipient and may not be used, published or redistributed to the public. A redacted version is available on <http://ncdc.gov.ng/diseases/sitreps>

Table 6: Response activities

Pillar	Activities to date	Next steps
Coordination	<ul style="list-style-type: none"> Response is being coordinated by the national multi-sectoral EOC hosted at NCDC, in collaboration with Federal Ministry of Health (FMOH), Federal Ministry of Water Resources (FMWR), Federal Ministry of Environment (FMEEnvrt), and partners National Rapid Response Teams (RRTs) with response commodities deployed by NCDC to support the response in ten states - Benue, Kano, Kaduna, Zamfara, Bauchi, Plateau, Jigawa, Katsina, Niger and the FCT 	<ul style="list-style-type: none"> The national multi-sectoral EOC activated at level 02 continues to coordinate the national response Continue zonal level trainings on cholera detection, reporting and case management Planned NRRT deployment to Adamawa, Gombe, Kebbi, Sokoto, Yobe and Oyo States
Surveillance	<ul style="list-style-type: none"> Ongoing surveillance in all states through the routine Integrated Disease Surveillance and Response (IDSR) and Event Based Surveillance (EBS) Providing offsite/onsite support to states and follow up for daily reporting and progress with response activities 	<ul style="list-style-type: none"> Continue data collation and harmonisation
Case Management & IPC	<ul style="list-style-type: none"> Provided technical support and response commodities to affected states 	<ul style="list-style-type: none"> Continue providing technical support on case management and IPC to states Continue training of Health Care Workers (HCW) on management of cholera Continuous follow up with states for updates and support
Laboratory	<ul style="list-style-type: none"> Supported testing of samples received from Benue, Niger, Plateau, Bauchi, Jigawa, Kaduna, Kano, Kwara, Katsina, Enugu, Bayelsa, Adamawa, Nasarawa, Gombe, Yobe, Borno, Oyo and FCT at NCDC National Reference Laboratory (NRL), Abuja Ongoing testing across state-level laboratories 	<ul style="list-style-type: none"> Planned sub-national level training of Laboratory Scientists on sample collection and analysis
WASH	<ul style="list-style-type: none"> Hygiene promotion, provision of safe water, water chlorination, household disinfection and sensitisation on dangers of open defecation ongoing in high-risk communities by WASH sector partners and Community Health Volunteers in the affected states 	<ul style="list-style-type: none"> Continue distribution of hygiene kits to affected states

	<ul style="list-style-type: none"> National Youth Volunteer Programme on Clean Nigeria Campaign launched by FMWR Continuous construction of sanitation and hygiene facilities with boreholes in cholera hotspots 	
Logistics	<ul style="list-style-type: none"> Essential response commodities are being distributed to all cholera affected states 	<ul style="list-style-type: none"> Continue supporting affected states with essential response commodities
Vaccination (led by NPHCDA)	<ul style="list-style-type: none"> Epidemiological trend is being monitored to guide ICG request for planned vaccination campaigns Reactive OCV campaigns were conducted in March at Agatu LGA, Benue State and in July at Bauchi LGA, Bauchi State Ongoing OCV campaigns in Dutse, Birnin-Kudu and Hadejia LGAs of Jigawa state 	<ul style="list-style-type: none"> Continue monitoring epidemiological trend to guide ICG request for planned vaccination campaigns Planned OCV campaigns in: Zamfara State (LGAs: Shinkafi, Zurmi), Yobe State (LGA: Damaturu)
Risk communication	<ul style="list-style-type: none"> Cholera jingles are being aired in English and local languages Community social mobilisation, media interviews, distribution of Information, Education and Communication (IEC) materials and awareness campaigns ongoing in affected communities Conducted Ministerial press briefings 	<ul style="list-style-type: none"> Continue airing of cholera jingles and distribution of IEC materials Continue media engagement meetings and training of journalist, other media professionals Continued follow-up with states for update on risk communication
State Response	Multi-sectoral State-level EOCs currently activated in Zamfara, Kaduna, Bauchi, Plateau, Kano, Enugu, Jigawa, Niger, Gombe, Sokoto, Katsina, Adamawa, Borno, Oyo and the FCT	Continue supporting state response activities

Challenges

- Difficulty in accessing some communities due to security concerns
- Open defecation in affected communities
- Lack of potable drinking water in some rural areas and urban slums
- Inadequate vaccines to cover all LGAs, wards and settlements with cholera outbreaks
- Inadequate health facility infrastructure and cholera commodities for management of patients (Ringer's lactate and ORS)
- Inadequate trained personnel in states for case management
- Poor and inconsistent reporting from states

Next Steps

- Conduct training on cholera surveillance, hotspot mapping and develop state level preparedness and response plans
- Maintain communication with and support to states for data reporting and response
- Conduct OCV campaigns in Zamfara and Yobe States
- Develop and submit cholera vaccination request to International Coordinating Group (ICG) and the Global Task Force for Cholera Control (GTFCC) for reactive and preventive cholera campaign with NPHCDA
- Continue advocacy to State Governments to increase funding in WASH infrastructure
- Pre-position response commodities across states
- Build capacity for sample collection, transportation and laboratory diagnosis
- Planned deployment of RRTs to more affected states
- Scale up risk communications

Notes on this report

Data Source

Information for this disease was case based data retrieved from the National Cholera Emergency Operations Centre.

Case definitions

Suspected Case:

- Any patient aged ≥ 2 years with acute watery diarrhoea and severe dehydration or dying from acute watery diarrhoea with or without vomiting
- In areas where a Cholera outbreak is declared, any person presenting with or dying from acute watery diarrhoea with or without vomiting

Confirmed Case: A suspected case in which *Vibrio cholerae* O1 or O139 has been isolated in the stool by culture

Erratum

- An additional 4,346 suspected cases reported had dates of onset falling in weeks prior to week 40.
- 2,695 records of suspected cholera cases in Niger state were removed during the data management processes following consultations with the state.
- 2 LGA names were erroneously considered unique, have been corrected. Total affected LGAs is 364
- The case numbers and statistics reported in this sitrep should be taken as the most up to date and overrides all previous sitreps.

DATA AS REPORTED AND ACCURATE BY NCDC AS AT MIDNIGHT 10th OCTOBER 2021